

Migrants and Health Evaluations in Chicago Area Shelters

August, 2023

- **Mary Tornabene**, RN, MSN, FNP-BC Family Nurse Practitioner, Shelter-Based Care Project Manager, Heartland Alliance Health

- **Mary L. Tornabene, MS, APRN, FNP-BC, Shelter Based Project Manager, Heartland Alliance Health**
 - *Mary earned her Bachelor of Science in Nursing from St. Xavier College, and her Masters of Science in Nursing from the University of Illinois at Chicago. Mary has been working with Heartland Alliance Health since 1990, serving persons who experience homelessness in their Northside health center and shelters throughout the city and suburbs. As a Family Nurse Practitioner, she provides care to persons throughout the life cycle, those living with HIV, and through Heartland Alliance's Marjorie Kovler Center she provides care and collaborative rehabilitation services to survivors of torture . In addition to patient care Mary is the project manager for shelter-based care, coordinating care at over 40 shelters in Chicago. In 2007 Mary was honored with the Outstanding Service Award from the National Health Care for the Homeless Council (NHCHC). Mary served on the Health Care for the Homeless -Clinician's Network Steering Committee from 2016-2021, and as chair during the coronavirus pandemic 2020-2021. She was on the Board of Directors for NHCHC 2019-2021.*

- Part of this presentation was developed in cooperation with Colleen Ryan, APRN, FNP-BC. Full permission has been granted for use

Objective

- **To gain an understanding of the social situation and physical risks before, during, and after forced migration; and the impact of culture on management of Tuberculosis**
-

Refugees, Asylum Seekers, and Immigrants

- **Refugees**

- Live in a 2nd country- usually a camp
- Apply to a host nation for admittance
- Are approved prior to arrival

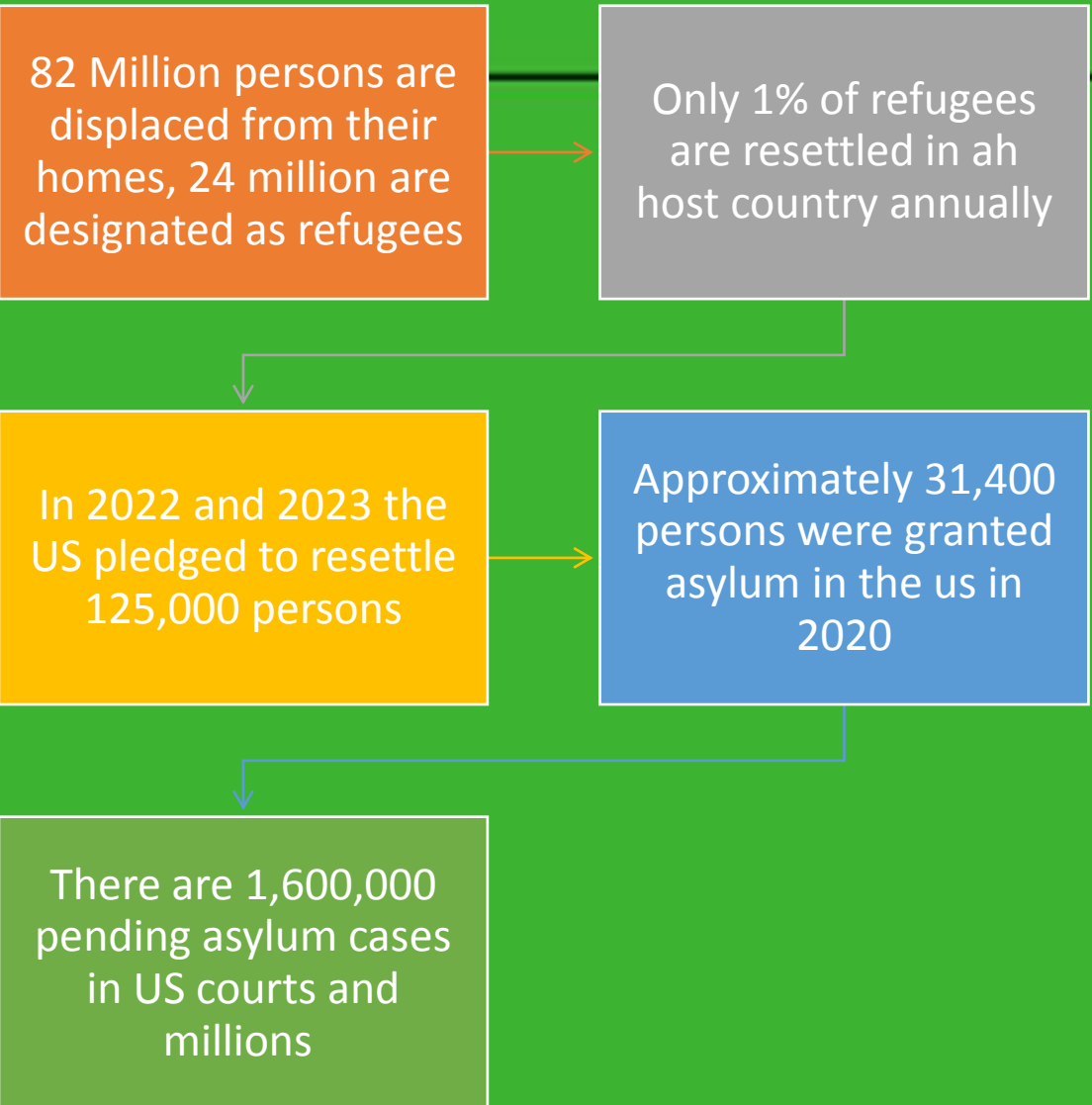
- **Asylum Seekers**

- Follow US law in seeking protection from persecution
- Must be in the US or at the border when they apply for asylum. It must be done within 1 year of arrival in the us
- Must demonstrate they meet the legal definition of a refugee

- **Immigrant**

- Not a legal status
- Often used to refer to persons with a Visa

Facts on Migration



Title 42

Title 42 of the US Code is the code that addresses public health, social welfare and civil rights. It dates back to 1944

Grants the government the ability to take emergency action to "stop the introduction of communicable disease"

Migrant Crisis



- Chicago is a Sanctuary City
- Illinois has immigration enforcement policies that align with Chicago's Sanctuary City status

Heartland
Alliance and
Persons with
Forced
Migration

Jane Addams/Travelers and Immigrants Aid

Refugee and Immigrant Community Services

Marjorie Kovler Center for Survivors of Torture

National Immigrant Justice Center

Refugee Care Coordinaton

Resettlement, Case Management and Care of HIV+
Refugees

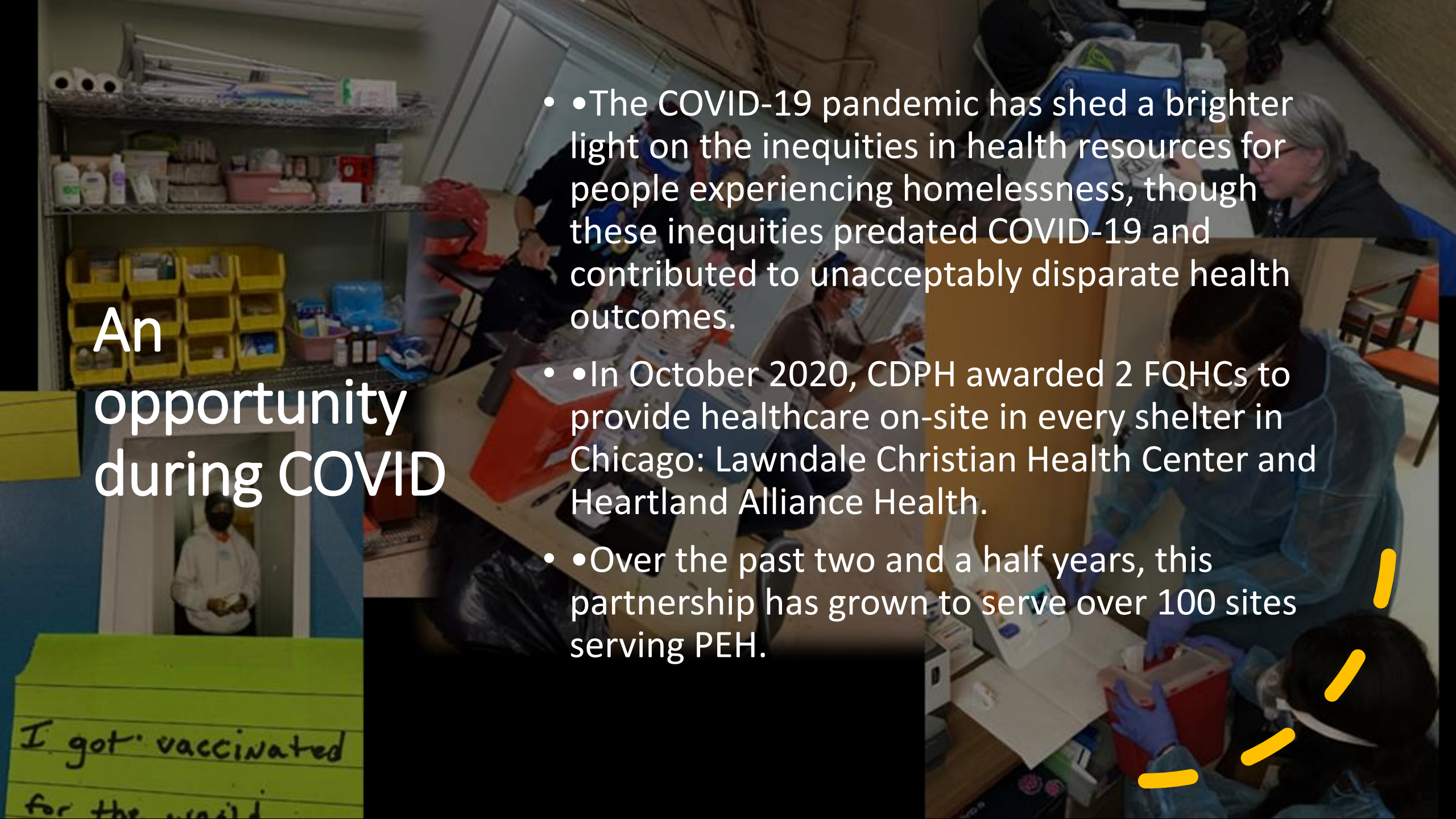
HAH Pre COVID-19 Landscape

- Provided Care to persons experiencing homelessness since the 1980's
- Integrated care model
- 3 Health Centers
- Staff a city mobile van
- Outreach teams in 15 shelters, encampments and gathering spaces

An opportunity during COVID

- •The COVID-19 pandemic has shed a brighter light on the inequities in health resources for people experiencing homelessness, though these inequities predated COVID-19 and contributed to unacceptably disparate health outcomes.
- •In October 2020, CDPH awarded 2 FQHCs to provide healthcare on-site in every shelter in Chicago: Lawndale Christian Health Center and Heartland Alliance Health.
- •Over the past two and a half years, this partnership has grown to serve over 100 sites serving PEH.

I got vaccinated for the world



Shelter-Based Care

Final Draft – Sept 12, 2020

Standards for Shelter-Based Health Care

Chicago Homelessness and Health
Response Group for Equity



Chicago, Illinois

Authors:

Mary L. Tornabene, MS, APRN, FNP-BC, Heartland Alliance Health
Thomas Huggett, MD, MPH, Lawndale Christian Health Center

Editors:

Jess Lynch, MCP, MPH, and Sydney Edmond, MHA, Illinois Public Health Institute
Eric Tornabene, Editor

Contributors:

Angela Moss, PhD, MSN, APN-BC, RN, Rush University
Todd Stull, LCSW, Journeys The Road Home
Heather Duncan, PhD, MSN, APRN FNP, North Park University and Lawndale Christian Health Center
James Anderson
Luchata Batipe
Evelyn Figueroa, MD, UI Health
Sabina Wong, MD, PCC Wellness
Keiki Hinami, MD and Christine Haley, MSSA, Cook County Health
Nancy Heil, MD
Laura Pabalan, MD and Karen Lui, MD, Rush University Medical Center

Late summer 2022 people began coming to our city!



PIVOT POINT



Migration Drivers

- Economic Crisis
- Lack of Basic Services
- Shortages of food and Medicine
- Human Rights Violations

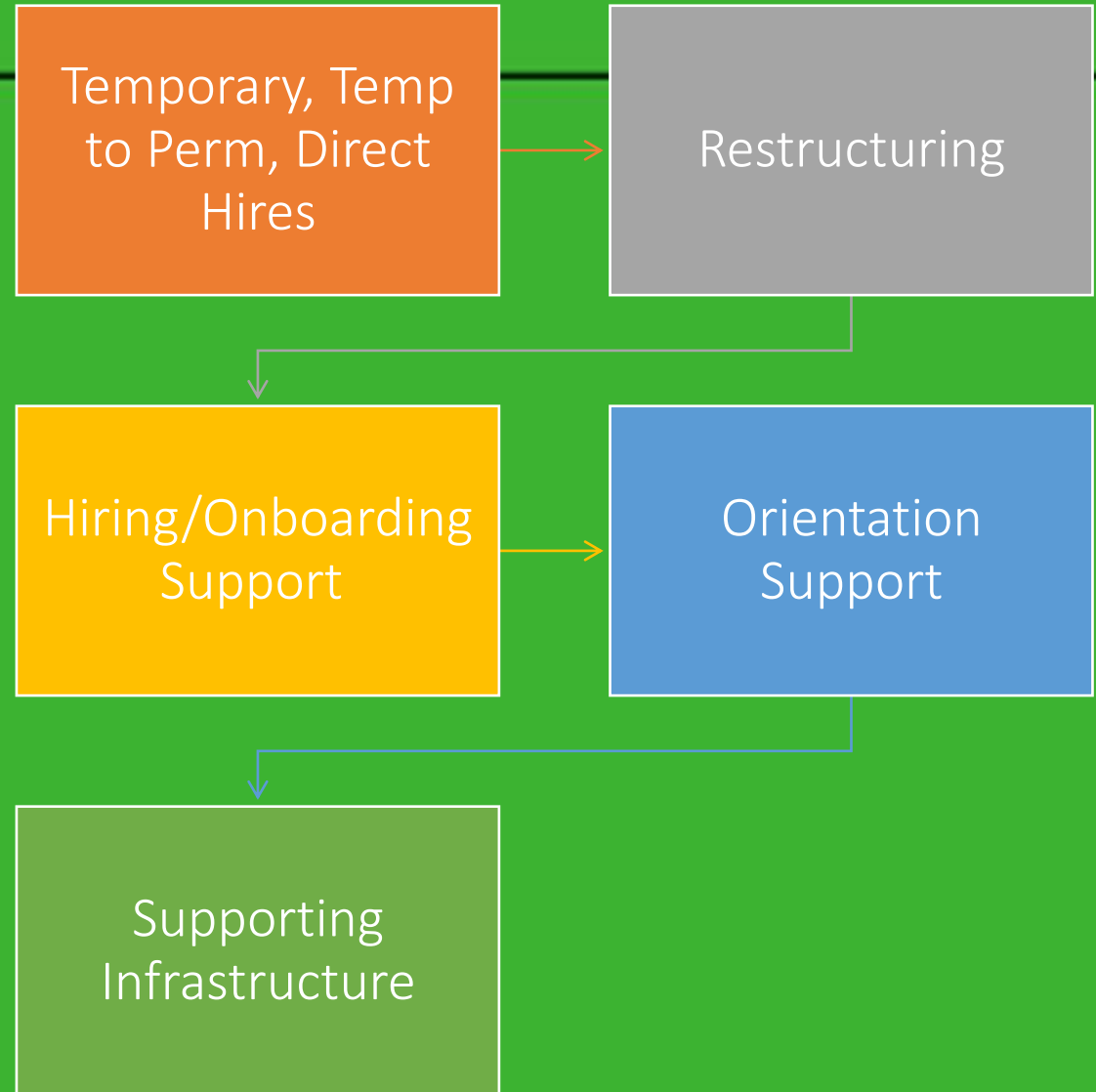


How care works

- Arrival
- Cook County Health for health screen
- Assigned a shelter

As one of the city's Lead Coordinating Organizations (LCO) for providing and overseeing shelter-based care in Chicago, HAH was asked to provide Services In the migrant expansion shelters

New Approaches



Collaboration Across Agencies

- CDPH
- DFSS
- Favorite staffing
- FQHC collaborations





Chicago Guest Assessment

First/Last Name: _____ DOB: _____
 HMIS #: _____ Contact Phone # (cell or friend or family): _____
 Date of Assessment: _____ Name and Number of Person doing Assessment: _____
 Health Problems: _____
 Current Medications: _____
 Allergies to Meds: _____

T _____ P _____ RR _____ BP _____ pO2 _____ BINAXNow results _____

"We are happy to talk with you today. Some of these questions are required by the Chicago Department of Public Health to protect everyone's health."

Questions:
TB: Now or in the past few months: have you had a new cough that has lasted 3 weeks or more; coughed up any blood; fevers that have lasted for a week; heavy sweats at night; unexpected weight loss; chest pains; tired easily; or contact with anyone with TB? (circle those that are YES, isolate for new cough, blood in sputum, fevers)
COVID-19: Any new cough, fevers, shortness of breath, muscle aches, headaches, or loss of taste or smell? (circle those that are YES and isolate if test POS)
Are you fully vaccinated against coronavirus? YES NO
Have you had any new rashes or itching, diarrhea/vomiting? (If YES, focused exam of rash; consider isolation)
First day LMP: _____ Are you pregnant?
Have you been in the hospital or emergency room recently? (If YES, for what, do you have the medicines prescribed?)
Do you have all of your medications for your medical issues? (If NO, meds should be provided to patient on-site)
The team also sees people for issues like depression or anxiety or other mental health issues; would it help you to talk with a counselor? Do you take medications for these issues? Do you have them? (If NO, provide on-site)
The team also sees people with substance use disorders (heroin, cocaine, alcohol, etc.) Do you need medication to avoid withdrawal? (If YES, provide on-site)
Have you ever been held captive (against your will)? HAVE you ever experience physical or mental suffering that was deliberately and systematically inflicted? (If YES, TO BOTH refer to Heartland for torture treatment, IF yes to 2 nd only DV care)
Do you have any wounds that are open? (If YES, examine and dress wounds)
Would you like to see the team for help with pain? Such as pain in your feet? Headaches/tooth pain/stomach upset/poor appetite/constipation?
Do you have any problems with getting around or going up more than 3-4 stair steps?
Anything else you need us to know?

FOCUSED EXAM (rashes, pink eye, wounds, infections)	MEDICATIONS/SUPPLIES GIVEN	FOLLOW-UP NEEDS

SIGNATURE and phone number of provider: _____

(Please give a copy of this form to the patient to give to the shelter health care provider, and keep a copy for your records.) 2022-09-06-1200

Workflows and Tools

Best Practices

- Trauma Informed Care
- Top/Most common conditions treated
- Keep TB out of the Shelter System
- Identifying and addressing the experience of surviving torture

Trauma Informed Care

TOOLS & UNDERSTANDING

- Who are the people we serve?
- Understanding what **trauma** is and how it impacts people's lives, including our own lives and interactions.
- Knowing then **how** we can best serve & support others.
- Simple approaches to **positive conversations**.
- Simple approaches to support **reducing risk and harm**.
- Basic steps in **safety & verbal de-escalation**.

Initial Findings:

- Skin
- GI
- MS pain
- Behavioral Health **



photo credit CNN

The Journey

- Rivers
- Jungle
- Mountains
- Countryside



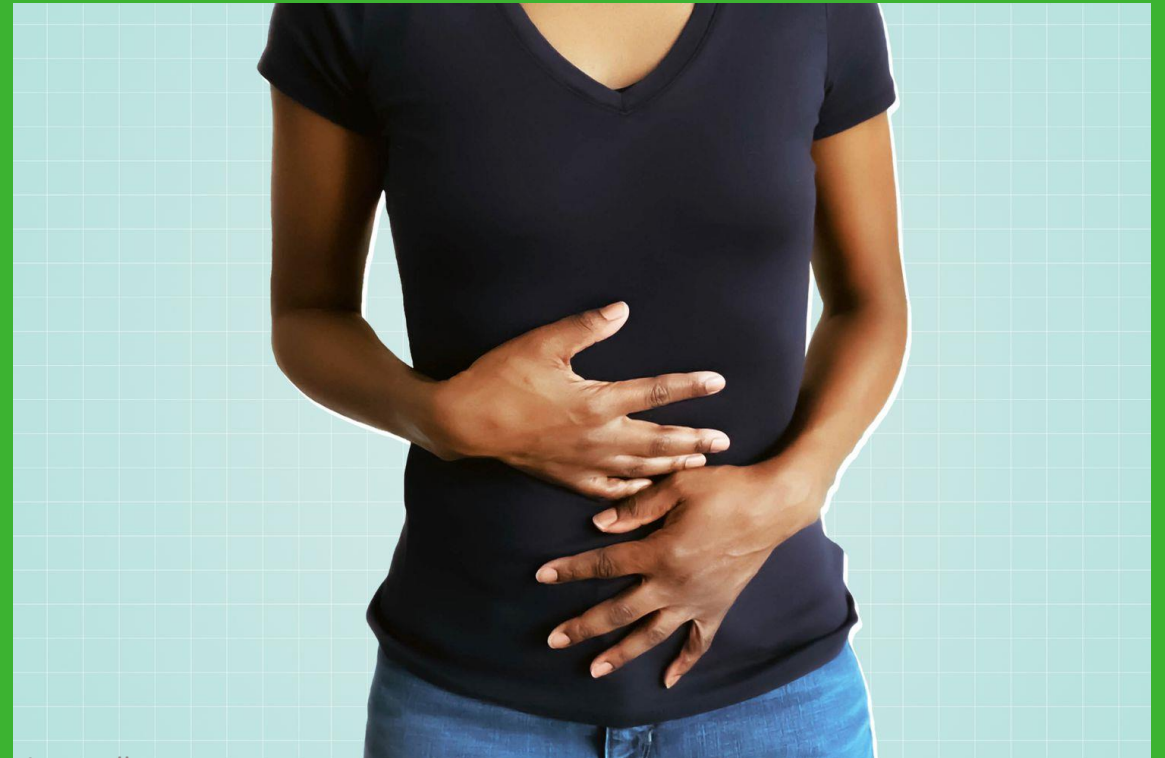
The Integumentary System

- Sunburn
- Rashes
- Feet
- Helminths



Gastrointestinal Complaints

- Diarrhea
- Bloating
- Pain
- Anorexia



Musculoskeletal Pain

- Injuries from journey
- Injuries from work



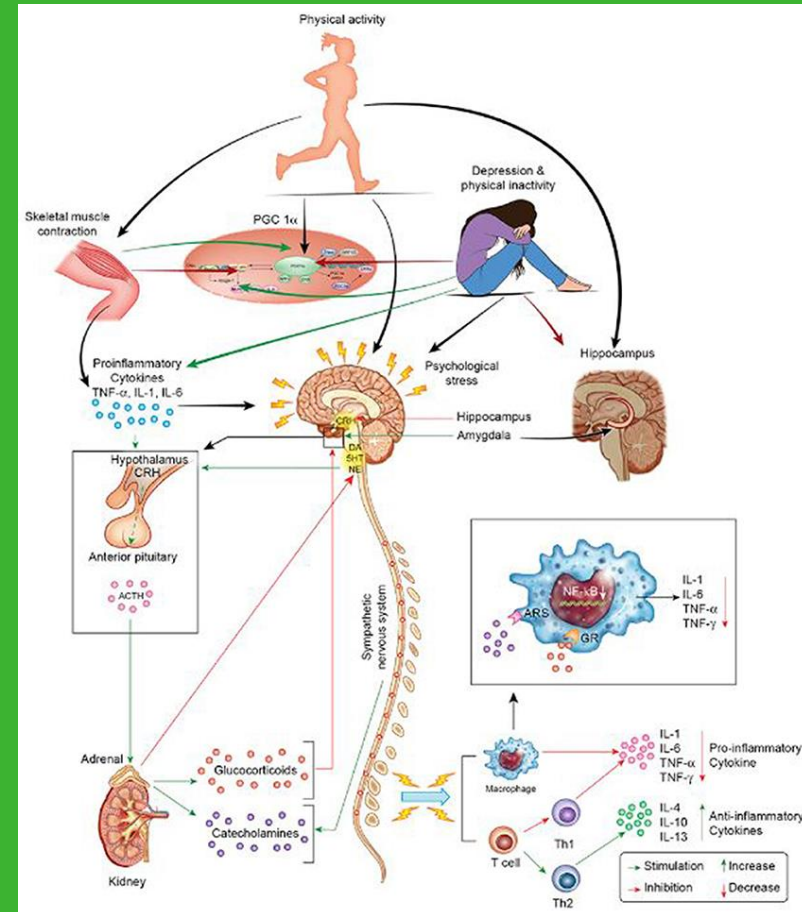
photo credit CNN

Subsequent Findings

- Hypertension
- Diabetes
- Thyroid Diseases
- Anemia
- Communicable Diseases/STI
- Survival of Torture

Impact of Forced Migration on the Immune System

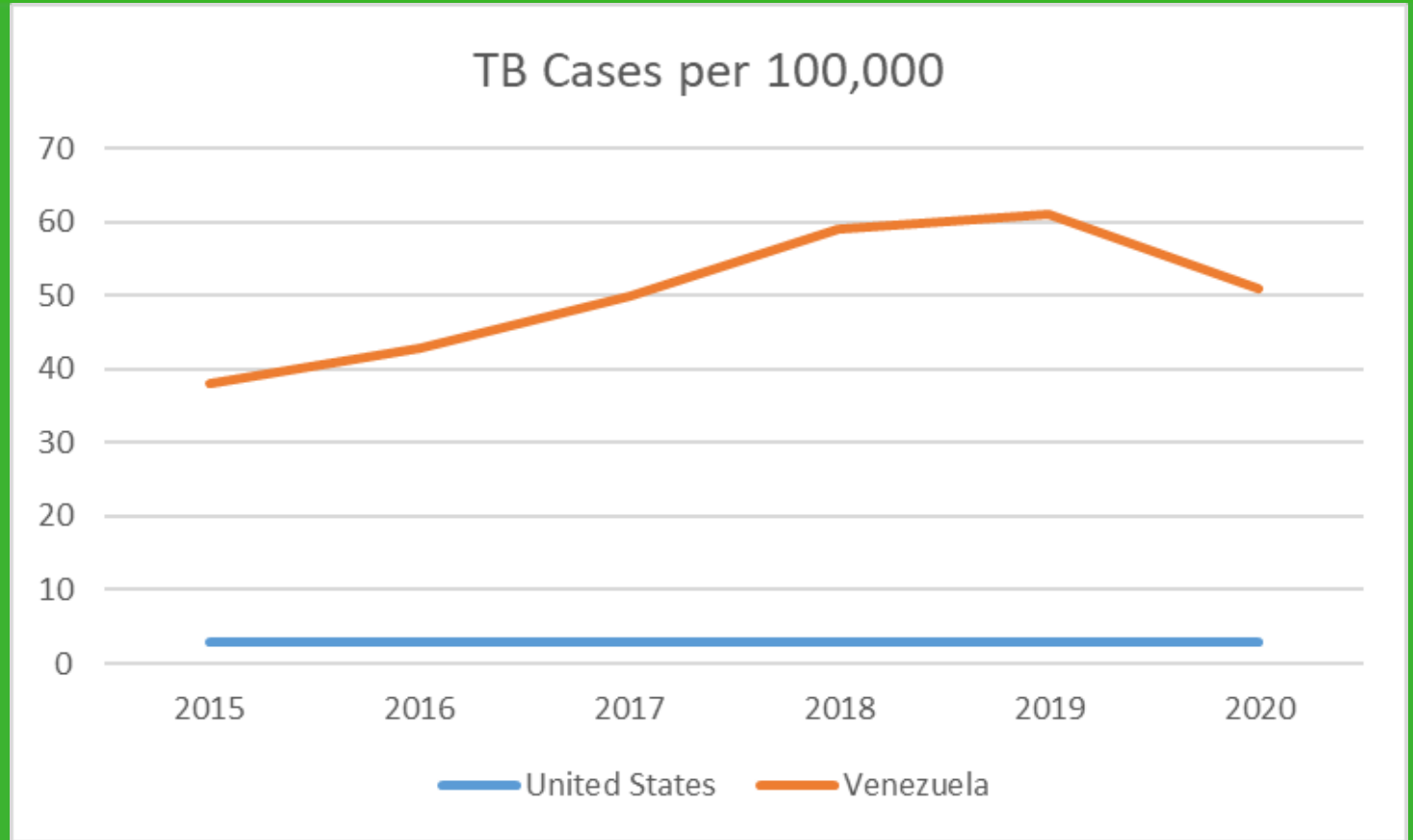
- Psychological Stress
- Nutritional Deficiencies
- Limited Access to Healthcare
- Exposure to new pathogens
- Immune Activation



Forced Migration and TB

- Reduced Immune Response
- Latent TB Reactivation
- Progression from Infection to Disease
- Risk of Dissemination
- Risk for Co-Infection
- Delayed Diagnosis

TUBERCULOSIS



TB Prevention and Response Coordination



**COOK COUNTY
HEALTH**

Screening for TB

New Arrival Health Screens by Cook County Health

- IGRA Testing
- Follow Up imaging
- Treatment LTBI

Identification and Management of Active TB Disease



**COOK COUNTY
HEALTH**

TB in Shelters

- 8 Persons with Active Disease Identified in the New arrival and Integrated Shelters
- 7 Male/1 Female
- 6 Pulmonary
 - **2 Smear Positive**
- 1 Scrofula
- 1 Spinal TB w Osteomyelitis

Case Investigations

- 2 Cases of Contagious Disease in shelters
 - Integrated Shelter
 - New Arrival Shelter
- Conducted by LCO
- Contracted with lab service
- Engagement of staff and guests

Outcomes

- Integrated Shelter
 - 90 Contacts
 - 49 tested IGRA
 - 5 Positive
 - Imaging Normal
 - LTBI treatment offered
 - Staff testing 8/31
 - PPD
- New Arrival Shelter
 - 14 persons slept in same room,
 - 4 past positives
 - 7 tested IGRA
 - 4 positive, conversions
 - Images normal
 - LTBI treatment being offered
 - 3 negative
 - Meeting this week to assess for expanded testing
 - Staff testing offered -

Screening Overview

- Symptom screen for all
 - Shelter staff training
 - HCH staff training
- New arrivals Health Screen
- Collaboration to obtain imaging on all positive IGRA
- Coordination meetings

Health Education and Literacy

SHELTER GUESTS

- System Navigation
- Resources
- Why is this important?



SHELTER STAFF

- TB vs LTBI
- Identifying Varicella
- Why is this important?

Lesson Learned

It's more than spelling,
commas matter

Mary Jane Smith-Doe

Smith-Doe, Mary Jane

Doe, Mary Jane Smith

On August 21

- 13,000 Asylum seekers have arrived in Chicago since late summer 2022
- 6,000 remain in shelters
- 1200 on the floors of 22 police stations, 180 persons at O'hare



A FILM FROM DANIEL

EVERY
THING
EVERY
WHERE
ALL AT
ONCE

天 地 行 空

COMING SOON

THE END

Questions?

Ideas?

MTornabene@heartlandalliance.org